

STAIN RESISTANCE TEST RESULTS

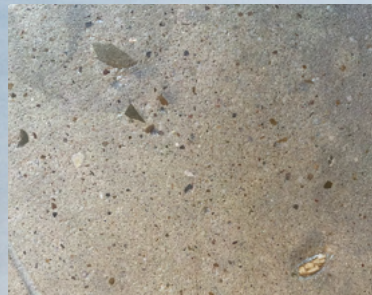
Substrate - Newly Poured & Non-Polished Troweled Slab

Surface Treatment: RIO-FLECT Densifier & RIO-FLECT Integrated Stain Guard

Temperature: 78°F @ 50% RH



Acrylic Concrete Stain



No Stain Penetration

Stain Agent: 100% Acrylic Dark Grey Concrete Stain

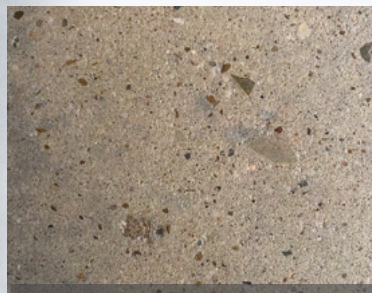
Dwell Time: 20 Minutes

Cleaning Method: Water Dampened Cloth

Result: Zero Stain Penetration



Yellow Mustard



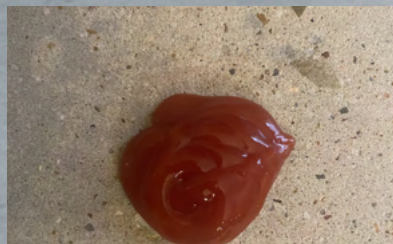
No Stain Penetration

Stain Agent: Yellow Mustard

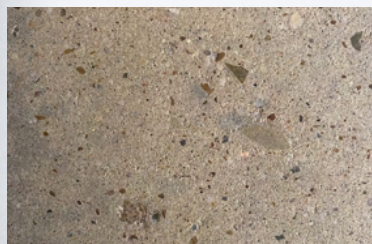
Dwell Time: 20 Minutes

Cleaning Method: Water Dampened Cloth

Result: Zero Stain Penetration



Ketchup



No Stain Penetration

Stain Agent: Ketchup

Dwell Time: 20 Minutes

Cleaning Method: Water Dampened Cloth

Result: Zero Stain Penetration



Vegetable Oil



No Stain Penetration

Stain Agent: Vegetable Oil

Dwell Time: 20 Minutes

Cleaning Method: Water Dampened Cloth

Result: Zero Stain Penetration